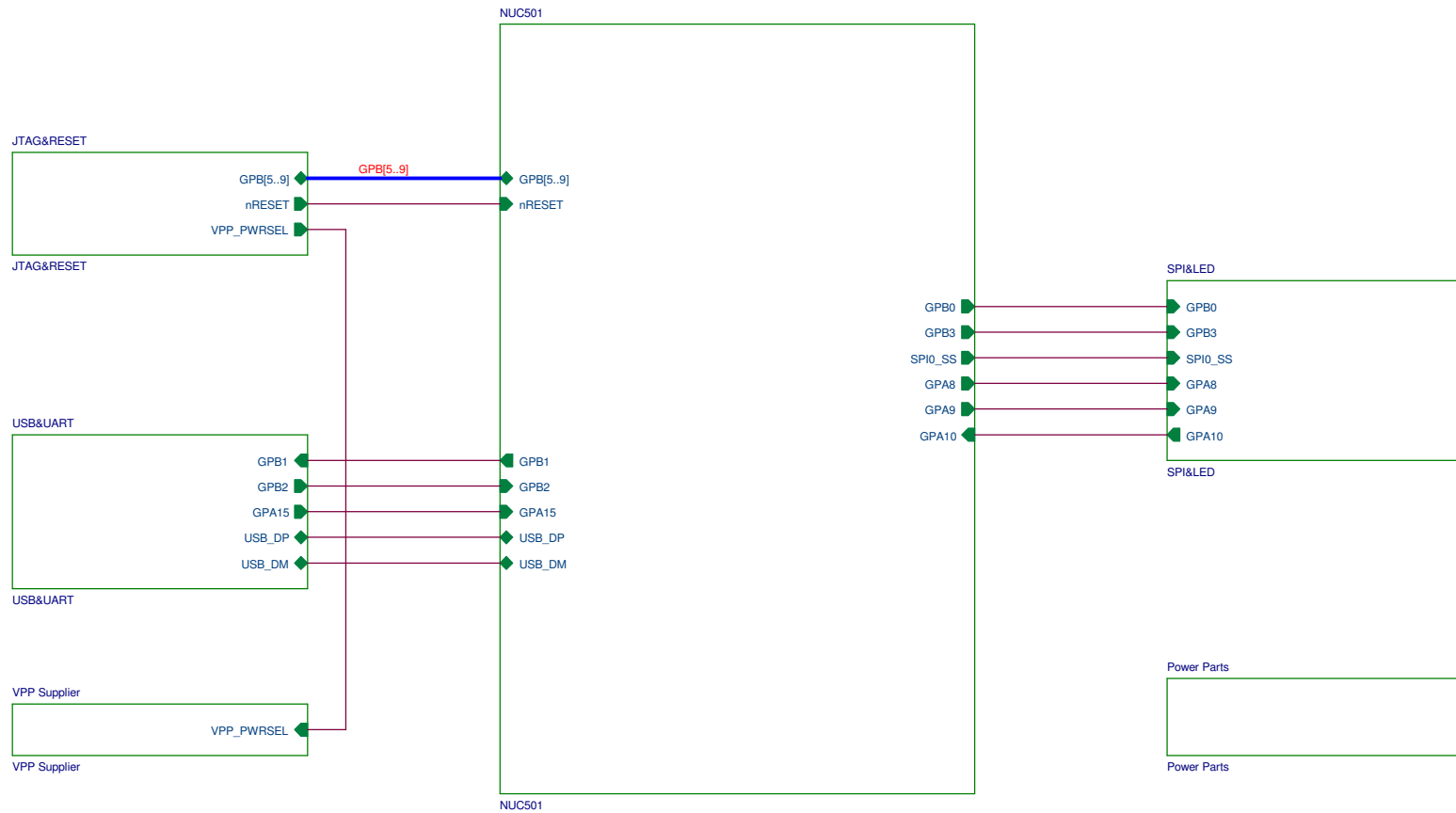


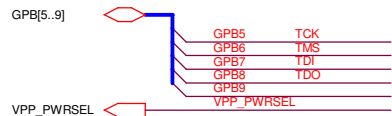
# III OTP Writer Board Ver 2.0 III



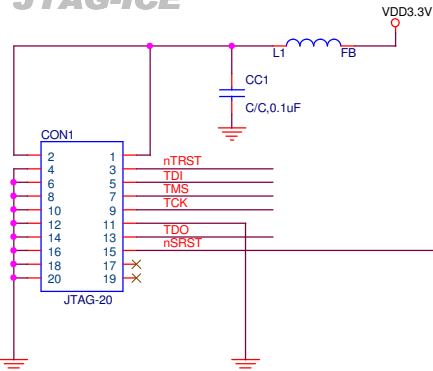
**nuvoTon**

Title		
NUC501/TOP Block		
Size	Document Number	Rev
B	<Doc>	B
Date:	Friday, May 22, 2009	Sheet 1 of 7

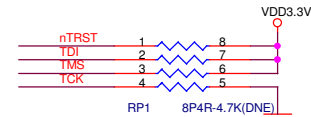
# !!! JTAG&RESET !!!



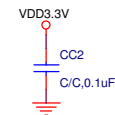
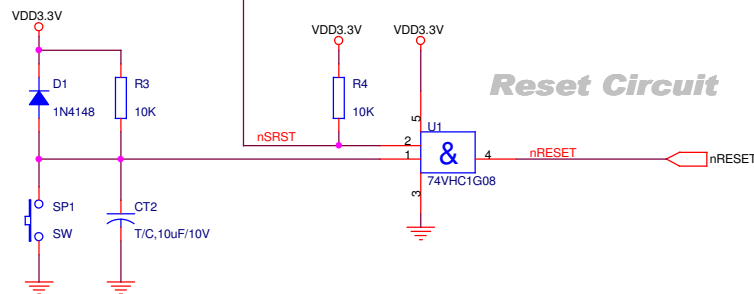
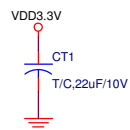
## JTAG-ICE



If you using OTP Writer mode,  
please keep the RP1 NC.



GPB9	Function
(1, 2)	nTRST
(2, 3)	VPP_PWRSEL



# nuvoTon

Title		
NUC501/JTAG&RESET		
Size	Document Number	Rev
B	<Doc>	B
Date:	Tuesday, August 04, 2009	Sheet 2 of 7

# III NUC501 III

## JTAG-ICE

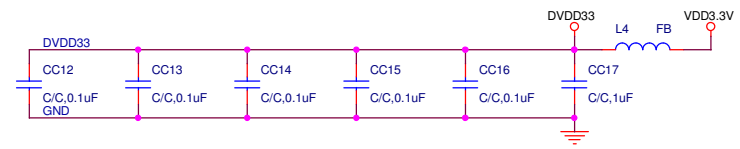
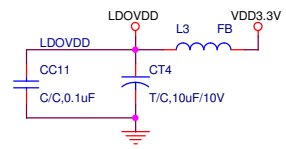
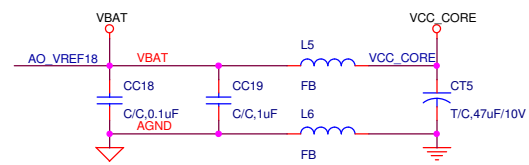
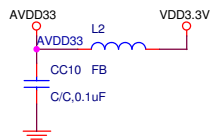
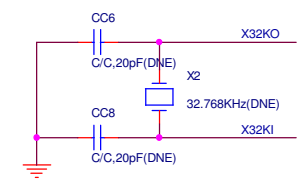
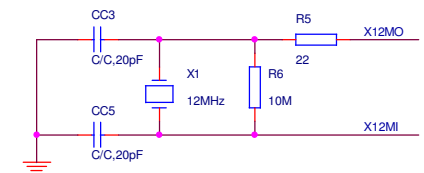
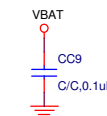
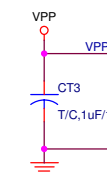
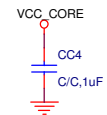
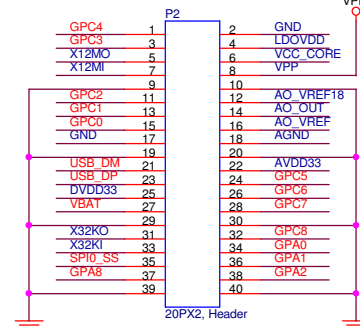
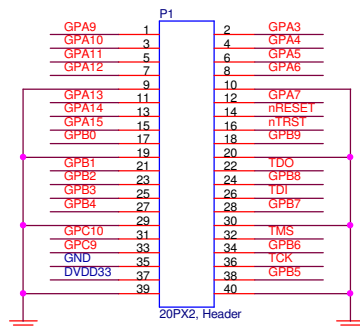
GPB[5..9] GPB[5..9]  
nRESET nRESET

## SPI&KPI&LED

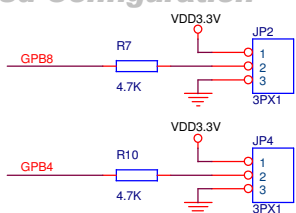
GPA10 GPA10  
GPA9 GPA9  
GPA8 GPA8  
SP10\_SS SP10\_SS  
GPB0 GPB0  
GPB3 GPB3

## USB&UART

GPB1 GPB1  
GPB2 GPB2  
USB\_DM USB\_DM  
USB\_DP USB\_DP  
GPA15 GPA15

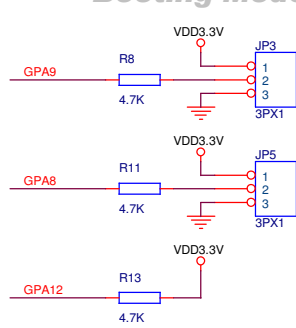


## SPI0 Speed Configuration



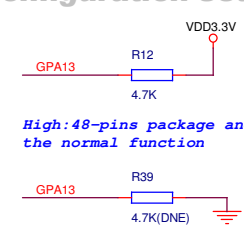
GPB8/GPB4	SPI Speed
(0,0)	72MHz
(0,1)	36MHz
(1,0)	18MHz
(1,1)	50KHz

## Boot Mode setting



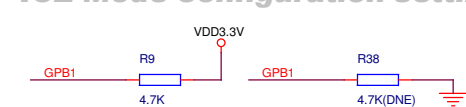
GPB12=1 GPA9/GPA8	Function
(0/0)	Boot from SRAM
(0/1)	Boot from USB
(1/0)	OTP program mode
(1/1)	Boot from SPI

## LQFP48 ICE mode configuration setting



High: 48-pins package and GPB[9:5] use the normal function  
Low: 48-pins package and GPB[9:5] use the JTAG ICE function

## ICE Mode configuration setting



High: normal mode Low: ICE mode

Title

NUC501/NUC501ADN

Size

B

Document Number

<Doc>

Date:

Tuesday, July 21, 2009

Sheet

3

of

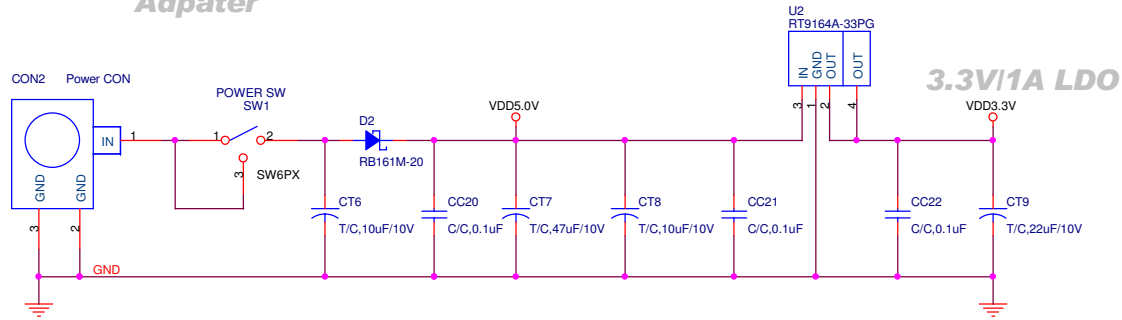
7

Rev

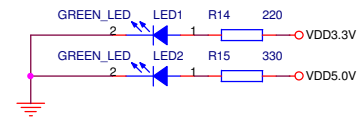
B

# III Power parts III

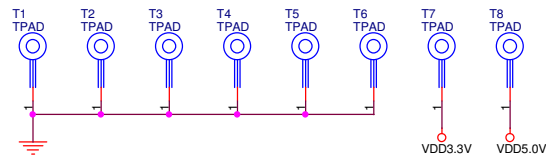
## 5V Power Adpater



## Power Good indicator



## Testing Pad

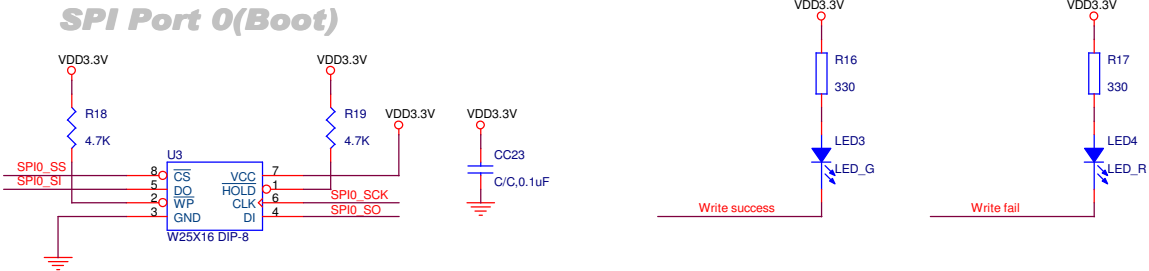


**nuvoTon**

Title		
NUC501/Power Parts		
Size	Document Number	Rev
B	<Doc>	B
Date:	Tuesday, July 21, 2009	Sheet 4 of 7

III SPI&LED III

GPA10	GPA10	SPI0_SI
GPA9	GPA9	SPI0_SO
GPA8	GPA8	SPI0_SCK
SPI0_SS		SPI0_SS
GPB0	GPB0	Write success
GPB3	GPB3	Write fail



nuvoTon

Title  
NUC501/SPI&I2C

Size  
B

Date: Tuesday, July 21, 2009

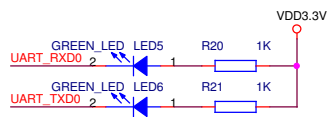
Sheet 5 of 7

Rev  
B

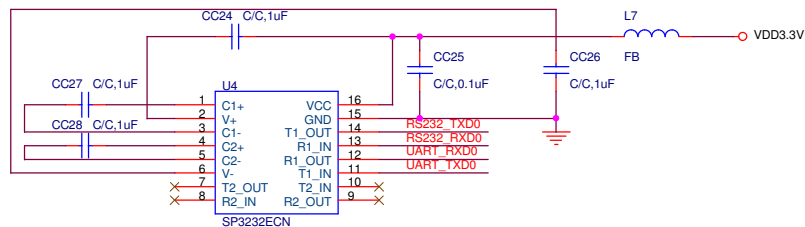
# /// USB&UART ///



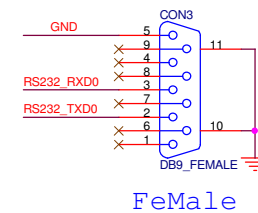
## UART0 TX/RX Indicators



## RS-232 Transceiver

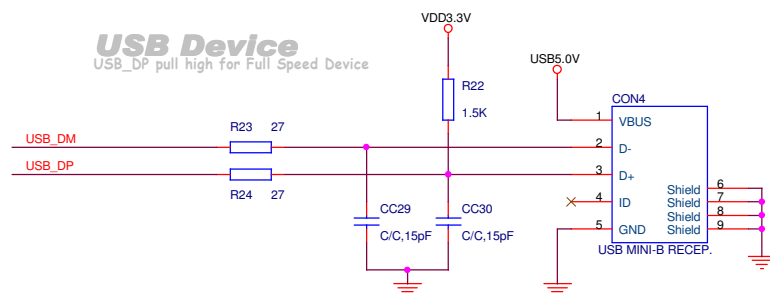


## UART Port 0



## USB Device

USB\_DP pull high for Full Speed Device



## USB Detect (GPA15)

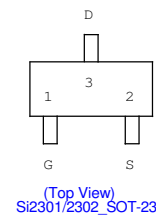
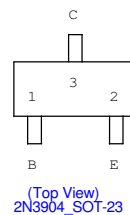
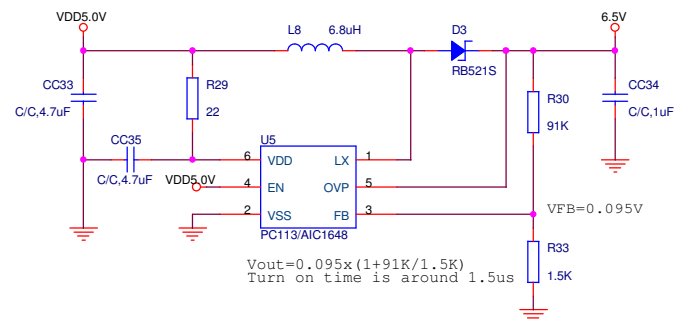
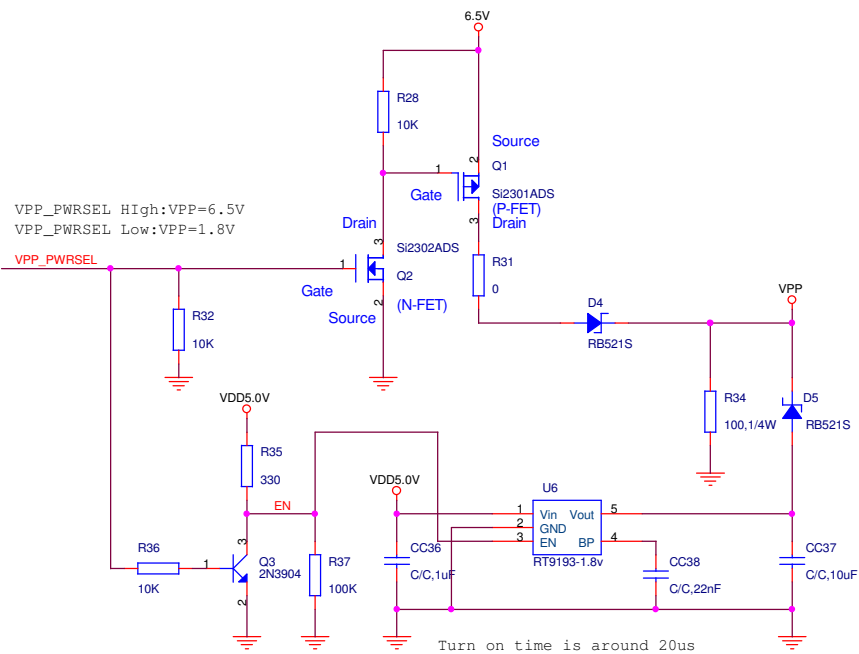


nuvoTon

Title		
NUC501/USB&UART		
Size	Document Number	Rev
B	<Doc>	B
Date:	Monday, May 25, 2009	Sheet 6 of 7

# III VPP Supplier III

VPP\_PWRSEL  VPP\_PWRSEL



**nuvoTon**

Title		
NUC501/VPP Supplier		
Size	Document Number	Rev
B	<Doc>	B
Date:	Tuesday, July 21, 2009	Sheet 7 of 7